



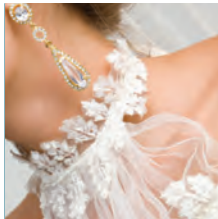
Stunning...
Forever!

Your personal
Colour and Style Consultation
means you make the right decisions.

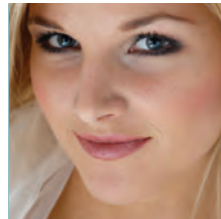
Discover your most flattering colours and styles.

This crucial **first step** gives you the confidence to co-ordinate your dress, make-up and hair stylists.

The result is a look that is truly, authentically **YOU**
- a look you will love forever!



Your Dress is in your best neutral shade of either pure white, winter white, ivory, cream, champagne, silver or gold. This colour complements your skintone and gives your face a healthy, vibrant glow. Neckline, sleeve, bust, waist, hip and hemline details combine to flatter your unique body shape and present a visually proportioned figure.



Your Make-up and Hair colours complement your skintone and highlight your eyes. Your eye make-up enhances your eye shape for captivating eyes, and your hairstyle frames your face shape beautifully.



Your Accessories are in either yellow gold, rose gold, white gold, silver, pearls or coloured gems to suit your skintone and the colour of your wedding dress. They complement your frame size, the style of your wedding dress and your unique personality to provide the perfect finishing touch.

For your personal consultation please contact:

philippa@colourisma.co.nz
www.colourisma.co.nz
(03) 3122128
(021) 533439



Colourisma
Be Your Colourful Self